

E5Ti First Generation Outrigger Installation Instructions

SITUATION: The early production of the E5Ti tower speakers require an alternate installation method for the E5Ti outriggers. This includes models with serial numbers IT-XXXXXX-00100 through IT-XXXXXX-00500. If the threads are raised as shown in Figure 2 then continue with the instructions below, if threads are flush as shown in Figure 1 outriggers should work as designed.

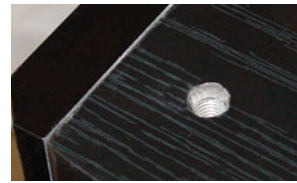


Figure 1. Flush Threaded Insert

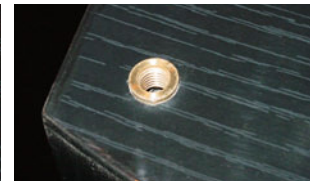


Figure 2. Raised Threaded Insert

DESCRIPTION: Due to a design change from the first production run of the E5Ti tower speakers, the E5Ti outriggers do not fit properly. More specifically, the threaded inserts on early serial number E5Ti tower speakers are positioned too far apart to allow installation of the E5Ti outriggers using the regularly supplied hardware.

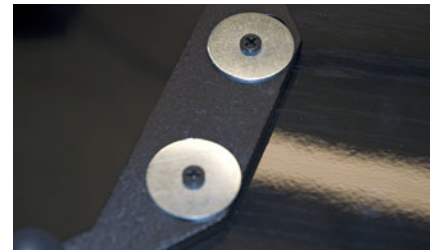
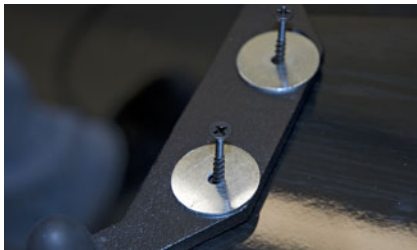


RESOLUTION: Installation of the rear outrigger with fender washers and wood screws, and slight modification of the front outrigger. Please follow the steps below.

STEP 1: Carefully turn the speaker upside-down, placing it on a non-marring surface. Place the rear outrigger into position on the bottom-rear of the speaker. Make sure the outrigger's chamfered slots are facing away from the cabinet (see example pictures). Using a 3/32-inch drill bit, drill two pilot holes (one for each slot) into the speaker cabinet for the rear outrigger. Drill the holes completely through the cabinet (about 3/4-inch deep).



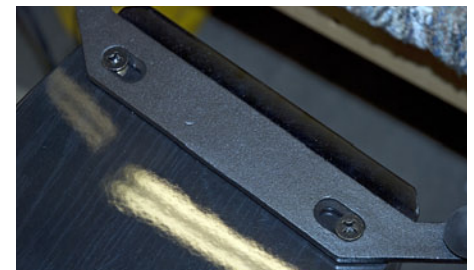
STEP 2: Place a large fender washer (the example shown is 3/16" x 1-1/4") on top of the outrigger. Place a coarse-threaded wood screw (Phillips head suggested) through each fender washer and into each pilot hole in the cabinet drilled in Step #1. The examples shown below are 8" x 1-5/8" coarse-threaded Phillips head wood screws. Using a Philips head screwdriver, tighten the screws until they are snug against the fender washers and the outrigger is secure against the speaker.



STEP 3: Using a round metal file, file approximately 1/16-inch of the metal from the outside edge of each slot of the front outrigger, as shown below. If a round metal file is not available, follow steps 1 and 2 for optional screw and washer installation of front outrigger.



STEP 4: Test fit the front outrigger by placing it into position on the bottom-front of the speaker. Make sure the outrigger's chamfered slots are facing away from the cabinet (see example pictures). Place a countersink bolt through each slot and into a threaded insert in the speaker. Using a Philips head screwdriver, tighten both bolts until they are snug against the outrigger and it is secure against the speaker.



NOTE: If both countersink bolts fit through the outrigger and easily screw into the threaded inserts in the speaker, you are finished filing. Otherwise, repeat Step #3 until the bolts fit through the outrigger and easily screw into the threaded inserts in the speaker.



382 Marshall Way, Layton, Utah • USA • 84041 Phone: (801) 991-1308 • Fax: (801) 543-3300 www.emptek.com

It is EMP Tek policy to continuously incorporate improvements into products; all specifications are subject to change without notice. Copyright © 2010 EMP Tek, LLC. All Rights Reserved.